



Aquarian 3000Classic

Customer Order Form
9340-1202

Agent Name _____
 Customer Name _____
 End User Plant Name _____
 Plant Location _____
 Plant Contact Name _____
 Phone # _____

Date _____
 FST Quote # _____
 Agent PO # _____
 End User PO # _____
 Required Ship Date _____

1. Qty of Systems _____ Voltage: 120V or 240V Water Conductivity _____ micromhos
 # of Probe Levels: 5 6 7 8 10 12 ___Other Column: 2000psi 3000psi Carbon Steel
 (CIRCLE ONE) **OR** Stainless Steel
 Nema 12 Nema 4 Enclosure for electronics

Each system is complete with: 1-Detection & Verification Electronics in a Nema 12 or Nema 4 Enclosure, 1-Standard Remote Display and 1-Water Column up to 30" with probes installed, Pre-wired Column Mounted Junction Box and hydro test report.

System price without options.....\$ _____ ea

2. Check off the options you are ordering for the above system(s)

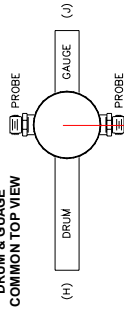
- 9310-9361 4-20mA Output Module \$ _____ ea
- 9310-9501 Auxiliary Relay Module \$ _____ ea
- 9300-4*** Additional Remote Display \$ _____ ea
- 9300-4*** Additional Small Remote Display \$ _____ ea
- 9300-2321 Nema 4X (IP65) Enclosure for 5 to 10 Probe Remote Display \$ _____ ea
- 9300-2322 Nema 4X (IP65) Enclosure for 12 Probe Remote Display \$ _____ ea
- 9300-2110 Aq3000 S/S Nema 4X Enclosure (no electronics) \$ _____ ea
- 9300-0002 Spare Aquarian High Pressure Probes (Former P/N 964584-01) \$ _____ ea
- 9310-9513 Spare System Monitor Module (Former P/N 964584-04) \$ _____ ea
- 9310-9350 Spare Detection & Verification Module (Former P/N 964584-03) \$ _____ ea
- 9310-9352 Spare Power Supply Module (Former P/N 964584-02) \$ _____ ea
- 9310-9505 5 to 8 Probe Mother Board Module \$ _____ ea
- 9310-9510 10 to 12 Probe Mother Board Module Nema 12 & Nema 4 \$ _____ ea
- 9310-9511 10 to 12 Probe Nema 4X Mother \$ _____ ea
- 6010-5101 Trip Bypass Pushbutton (for one level) \$ _____ ea
- 9300-3315 Interposing Relays (DPDT 150VDC 3A rating) 120V \$ _____ ea
- Flanges State Style,Face,Class on the drawing on reverse side \$ _____ ea
- Socket Weld Couplings State size _____ \$ _____ ea
- Gauge Connections State size on the drawing on the reverse side \$ _____ ea
- 9399-0503 Column material mill certification \$ _____ ea
- 6650-1802 12 Conductor Shielded (10Probe JBox to Cubicle) \$ _____ per meter
- 6650-1804 18 Conductor Shielded (12Probe JBox to Cubicle) \$ _____ per meter
- 6650-2450 25 Conductor Non-Shielded (10Probe Cubicle to Display) \$ _____ per meter
- 6650-2460 30 Conductor Non-Shielded (12Probe Cubicle to Display) \$ _____ per meter
- Extra Length Per foot charge for columns over 30" \$ _____ per foot

3. Complete drawing on reverse side.

Total Options.....\$ _____

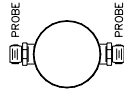
(Note: Above pricing is as per the published list price, please refer to your sales contract for applicable discounts. When all manufacturing information has been received, an order acknowledgement will be faxed with applicable agent discounted prices.)

**DRUM & GAUGE
COMMON TOP VIEW**



**DRUM & GAUGE
CUSTOMER REQUIREMENTS :**

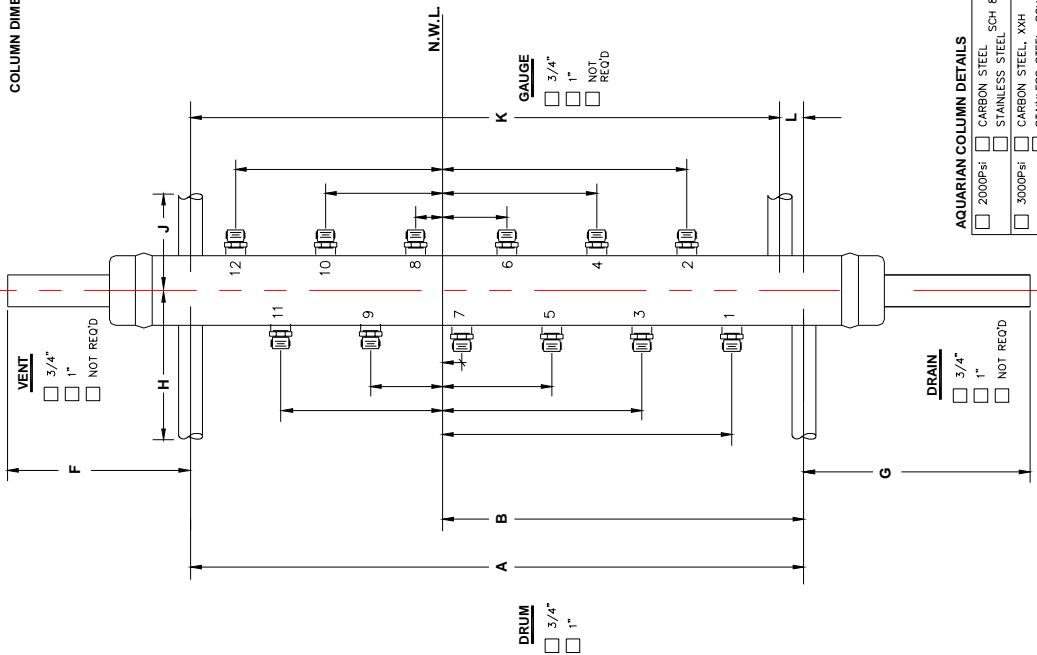
PLEASE INDICATE DRUM (H) & GAUGE (J)
CONNECTION ORIENTATION.



COLUMN DIMENSIONS :

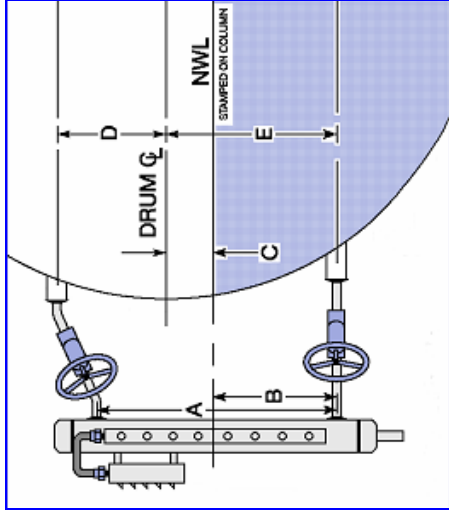
DESCRIPTION	CUSTOMER DIMENSIONS
A COLUMN DRUM CONNECTION CENTERS	
B COLUMN WATER CONNECTION TO NWL	
C NWL TO DRUM CENTER LINE (CL)	
D DRUM CL TO STEAM CONNECTION	
E DRUM WATER CONNECTION TO DRUM CL	
F CENTER OF STEAM CONNECTION TO END OF VENT	
G CENTER OF WATER CONNECTION TO END OF DRAIN	
H CENTER OF COLUMN TO END OF DRUM CONNECTION	
J CENTER OF COLUMN TO END OF GAUGE CONNECTION	
K COLUMN GAUGE CONNECTION CENTER	
L CENTER OF WATER TO CENTER OF GAUGE CONNECTION	

ABOVE FOR
ORIENTATION



AQUARIAN COLUMN DETAILS

<input type="checkbox"/> 2000PSI	<input type="checkbox"/> CARBON STEEL SCH 80
<input type="checkbox"/> 3000PSI	<input type="checkbox"/> STAINLESS STEEL SCH 160



NOTES:

- PROBES MUST BE A MINIMUM OF 2" APART ON SAME SIDE OF COLUMN.
- PROBES MUST BE A MINIMUM OF 0.75" APART ON OPPOSITE SIDES OF COLUMN.
- UPPERMOST PROBE MUST BE A MINIMUM OF 1" BELOW STEAM DRUM CONNECTION.
- LOWERMOST PROBE MUST BE A MINIMUM OF 1.5" ABOVE WATER DRUM CONNECTION TO BEANS & ROBEW CONNECTED INSTEAD OF S&W CONNECTED.
- UPPERMOST & LOWERMOST PROBES MUST BE A MINIMUM OF 4.5" FROM ENDS OF PIPE CAPS. (CONSULT FACTORY)
- STEAM PIPING MUST SLOPE 2% FROM DRUM TO COLUMN CONNECTION (ISOLATION VALVE (GLOBE TYPE) MUST BE INSTALLED WITH STEM HORIZONTAL).
- FST WILL USE DISPLAY MARKINGS TO DENSITY ERROR CORRECT PROBE LOCATIONS.
- ALL DIMENSIONS ARE IN INCHES.
- CENTER OF COLUMN & JUNCTION BOX DEPTH = APPROXIMATELY 7".

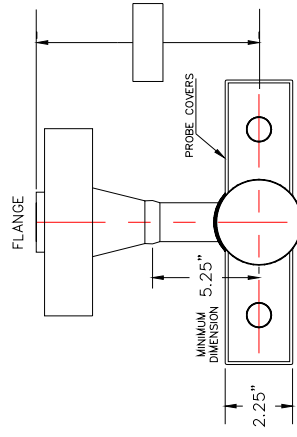
DISPLAY MARKINGS:

FOR SYSTEMS ABOVE 12
PROBE LEVELS CONTACT FACTORY.

PROBE LEVEL	DISPLAY MARKINGS
12	
11	
10	
9	
8	
7	
6	
5	
4	
3	
2	
1	

CONTRACT INFORMATION

CUSTOMER:	
LOCATION:	
P.O. No.:	/SERIAL #
OPERATING PRESSURE:	TEMPERATURE:
DESIGN PRESSURE:	TEMPERATURE:



**OPTIONAL
FLANGED DRUM CONNECTIONS**

- | | |
|-----------------------------------|--|
| <input type="checkbox"/> LMR | <input type="checkbox"/> SIZE ANSI CLASS |
| <input type="checkbox"/> NOT RECD | <input type="checkbox"/> LTRF |
| | <input type="checkbox"/> OTHER |



**FOSSIL STEAM
TECHNOLOGIES INC.**

This drawing is the property of Fossil Steam Technologies Inc. and is not to be reproduced, stored in a retrieval system, or made available in any form or by any means, electronic, mechanical, photocopying, recording, or by any information storage and retrieval system, without the prior written permission of Fossil Steam Technologies Inc.

TITLE :

**AQUARIAN 3000Classic WATER COLUMN
5 -12 PROBE LEVELS**

DRAWING NO. : 3000C-912605

REVISION : 0