

Package Boiler Control Systems

Fossil Power Systems Inc. (FPS) has been engineering boiler control systems for over two decades. As part of FPS's extensive product offering, our standard control package is the perfect choice for your single / dual burner boiler application. It provides an easy-to-use operator interface coupled with proven PLC technology. Standard features include DCS interface, FPS Spectrum UV-5 flame scanner, FPS ignition system and brand name PLC hardware.

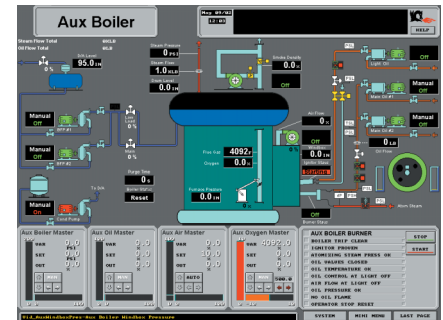
The standard package utilizes PLC architecture and programming software conforming to the IEC 61131-3 specification. Industry standard communications, combined with Windows® based programming, provides the end user with a cost effective and user friendly approach to their control requirements. The standard package can be easily tailored to any preferred PLC platform.

The two key components of the FPS Package Boiler Controls include the Burner Management System (BMS) and the Boiler Modulating Controls (BMC). These provide the end user with a system that complies with the latest requirements of NFPA 85, and also provides fully metered, lead/lag combustion control with oxygen trim.

TURN-KEY:

Beyond the supply of the controls hardware, FPS can also provide complete turn-key solutions from design concept, to installation and start-up, including but not limited to, the following:

- Design (facilities and system architecture)
- Engineering (Civil, Mechanical, Electrical)
- Gas Conversions
- Complete Valving (valve racks) and piping
- CSA Approved Gas and Oil Valves
- Complete Field Instrumentation including pressure, temperature and flow products
- Low-NOx Burner Upgrade
- Installation, Start-Up and Commissioning Assistance
- Facilities Construction
- Customer Training
- Representation of end user with approval bodies from design to approval (CSA, TSSA etc.)



AUXILIARY BOILER CONTROL PANEL

KEY FEATURES:

- Programmable Logic Control (PLC) control platform
- IEC 61131-3 editors
 - FBD – Function Block Diagram
 - SFC – Sequential Function Chart
 - LD – Ladder Diagram
 - ST – Structured Text
 - IL – Instruction List
- Industry Standard Communication Protocol
- DCS Interface Capability
- NEMA 4 Control cabinet
- Pre-wired, factory tested
- FPS Spectrum UV Flame Scanner
- FPS Ignitor with Integral Flame Detector
- CSA Approved Valves built into Valve Trains
- Meets all NFPA 85 requirements
- FST Aquarian Alarm Module for Low Water Level

Controlling
the **power**
of **steam**



Fossil Power Systems Inc.
10 Mosher Drive Dartmouth, Nova Scotia
B3B 1N5 Canada
Phone: 1-902-468-2743
Fax: 1-902-468-2323

Sales: Sales@Fossil.ca
Support: Support@Fossil.ca
Administration: Admin@Fossil.ca
www.Fossil.ca

AN ISO REGISTERED COMPANY

FEB/03 9290-1001

DISTRIBUTED BY: